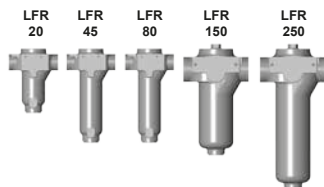




## Inline Filter LFR

up to 250 l/min, up to 120 bar



**ELEMENT FLOW  
DIRECTION FROM IN TO  
OUT**

### 1. TECHNICAL SPECIFICATIONS

#### 1.1 FILTER HOUSING

##### Construction

The filter housings are designed in accordance with international regulations. They consist of a filter housing and a screw-on cover plate. The element is top-removable.

Standard equipment:

- installation holes in the housing
- magnetic core built into cover plate
- without bypass valve
- oil drain plug

#### 1.2 FILTER ELEMENTS

HYDAC filter elements are validated and their quality is constantly monitored according to the following standards:

- ISO 2941, ISO 2942, ISO 2943
- ISO 3968, ISO 11170, ISO 16889

#### Contamination retention capacities in g

	Glass fibre (ULP)		
	5 µm	10 µm	25 µm
20	1.45	2.61	2.9
45	3.35	6.03	6.7
80	4.18	7.51	8.35
150	5.25	9.45	10.5
250	8.5	15.3	17

	Glass fibre with pre-filter (UHC)		
	5 µm	10 µm	20 µm
20	4.64	6.96	7.83
45	10.72	16.08	18.09
80	13.36	20.04	22.55
150	16.8	25.2	28.35
250	27.2	40.8	45.9

Filter elements are available with the following pressure stability values:

Glass fibre (ULP):	6 bar
Glass fibre with pre-filter (UHC):	6 bar
Wire mesh (WR):	6 bar
Other filtration ratings on request	

#### 1.3 SEALS

NBR (=Perbunan)

#### 1.4 SPECIAL MODELS

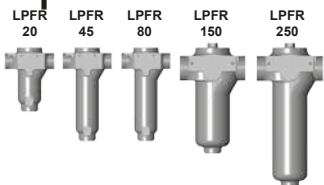
- Port for clogging indicator in filter housing
- Without magnetic core
- Bypass valve built into the head
- Seals in FPM, EPDM

#### FILTER SPECIFICATIONS

Nominal pressure	120 bar
Temperature range	-10 °C to +120 °C
Material of filter housing	EN-GJS
Material of cover plate	EN-GJS: LFR 20 to 80 9SMn28k: LFR 150 to 250
Type of clogging indicator	VM (differential pressure measurement up to 210 bar operating pressure)
Pressure setting of the clogging indicator	2 bar (others on request)
Bypass cracking pressure (optional)	2.5 bar (others on request)

## Inline Filter LPFR

up to 250 l/min, up to 25 bar



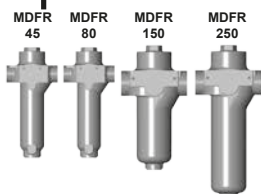
**ELEMENT FLOW  
DIRECTION FROM IN TO  
OUT**

#### FILTER SPECIFICATIONS

Nominal pressure	25 bar
Temperature range	-10 °C to +120 °C
Material of filter housing	EN-GJS: LPFR 20 to 250
Material of cover plate	EN-GJS: LPFR 20 to 80 EN-GJL: LPFR 150 to 250
Type of clogging indicator	VM (differential pressure measurement up to 210 bar operating pressure)
Pressure setting of the clogging indicator	2 bar (others on request)
Bypass cracking pressure (optional)	2.5 bar (others on request)

## Inline Filter MDFR

up to 250 l/min, up to 250 bar



**ELEMENT FLOW  
DIRECTION FROM IN TO  
OUT**

#### FILTER SPECIFICATIONS

Nominal pressure	250 bar
Temperature range	-10 °C to +120 °C
Material of filter housing	EN-GJS
Material of cover plate	S355JR: MDFR 45 to 80 EN-GJS: MDFR 150 to 250
Type of clogging indicator	VD (differential pressure measurement up to 400 bar operating pressure)
Pressure setting of the clogging indicator	2 bar (others on request)
Bypass cracking pressure (optional)	2.5 bar (others on request)

## 2. MODEL CODE

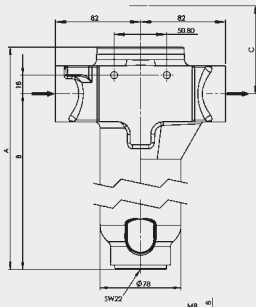
### 2.1 COMPLETE FILTER

Type	Filter material of element	Size	Operating pressure	Port	Filtration rating	Clogging indicator (VA)	Type code	Modification number	Supplementary details
<b>LFR</b>	<b>ULP</b> =Glass fibre	20*	<b>D</b> =25 bar	<b>B</b> =G 1/2	5	<b>W</b> =no port for indicator	<b>1</b> =indic. on right in flow direction	<b>.x</b> =the latest version is always supplied	<b>-V</b> =FPM direction (Viton)
<b>LPFR</b>	<b>UHC</b> =Glass fibre with pre-filter	45	(only LPFR)	<b>C</b> =G 3/4	10	<b>B</b> =visual	<b>2</b> =indic. on left in flow direction		<b>-B</b> =special bypass cracking pressure
<b>MDFR</b>	<b>WR</b> =Wire mesh	80 150 250	<b>I</b> =120 bar (only LFR) <b>M</b> =250 bar (only MDFR)	<b>D</b> =G1 <b>F</b> =G1 1/2	20(UHC) 25(ULP)	<b>C</b> =electrical <b>D</b> =visual / electrical	<b>3</b> =no indic.		<b>-OM</b> = without magnetic core

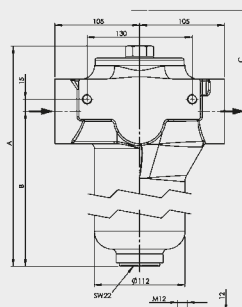
\* Size 20 only possible for LPFR and LFR!

## 3. DIMENSIONS

LFR 20 - 80

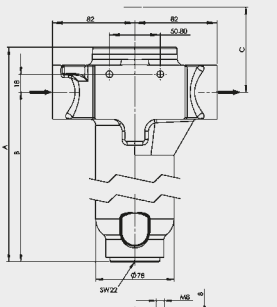


LFR 150 - 250

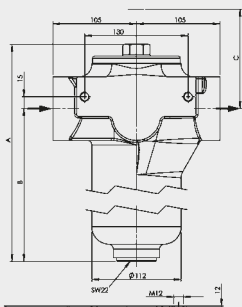


LFR	A	B	C	E	F Ø	Weight incl. element [kg]
20	212	167	180	G ½	34	5.3
45	312	267	250	G ¾	42	5.8
80	312	267	280	G 1	47	6.6
150	354	273	335	G 1½	68	14.2
250	454	373	435	G 1½	65	15.0

LPFR 20 - 80

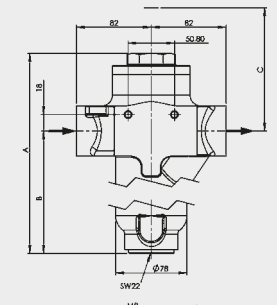


LPFR 150 - 250

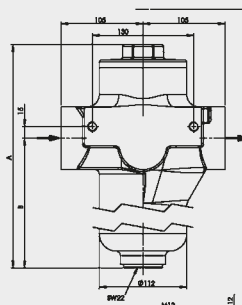


LPFR	A	B	E	F Ø	Weight incl. element [kg]
20	212	167	G ½	34	5.3
45	312	267	G ¾	42	5.8
80	312	267	G 1	47	6.6
150	354	273	G 1½	68	14.2
250	454	373	G 1½	65	15.0

MDFR 40 - 80



MDFR 150 - 250



MDFR	A	B	C	E	F Ø	Weight incl. element [kg]
45	360	274	275	G ¾	42	7.9
80	360	274	305	G 1	47	8.6
150	405	282	365	G 1½	65	18.4
250	505	382	465	G 1½	68	19.0

## NOTE

The information in this brochure relates to the operating conditions and applications described.  
For applications or operating conditions not described, please contact the relevant technical department.  
Subject to technical modifications.

**HYDAC Filtrertechnik GmbH**  
Industriegebiet  
**D-66280 Sulzbach/Saar**  
Tel.: 0 68 97 / 509-01  
Fax: 0 68 97 / 509-300  
Internet: [www.hydac.com](http://www.hydac.com)  
E-Mail: [filter@hydac.com](mailto:filter@hydac.com)